



Thanks to **you**, we're building a **stronger community together**

bring about lasting **change**



why United Way?

How Do We Do It?

Our Allocations Committee volunteers ensure that every program we fund, fits our criteria. By investing strategically in local programs and services, we ensure your donation goes where it's most needed.

Money Well Spent

When you give to United Way, you can rest assured that your gift will be well spent. In fact, United Way is among the most efficient charities in North America.

Thanks to our large volunteer force and strong local partnerships, we keep our fundraising and administrative costs to a minimum. That means your gift has a significant impact.

Fully Accountable

Every year a team of experienced volunteers and professionals review the agencies we support. Our team assesses each agency's performance, making sure it meets our high standards. We apply the same standard to ourselves. Every year an independent auditor reviews our systems and financial operations to ensure that your gift is used as efficiently and effectively as possible.

United Way of Greater Simcoe County

your **donation** supports **people** all across **Simcoe County**

build on what matters.....



inspire **Build** change

United Way of Greater Simcoe County

136 Bayfield Street, Ste. 100, Barrie, ON L4M 3B1
tel 705-726-2301
fax 705-726-4897
unitedwaysimcoecounty.on.ca
Charitable Business
11879 9485 RR0001

inspire our **County**



your **gift** makes a difference

Right Here, Right Now

When you give to United Way, you're helping to make Simcoe County stronger. Over 150,000 people — 1 in 3 members of our community — receive help from a United Way funded program or service every year.

Through your generosity we:

- Help children and youth flourish through adult role models and social, recreational and educational programs
- Provide support and rehabilitation services to those with physical, mental and emotional disabilities
- Help seniors live with dignity and a better quality of life
- Provide counselling, crisis intervention and safety from violence
- Offer short-term shelter and rehabilitation for those who need it
- Provide long term solutions to address poverty, homelessness and affordable housing.

capacity building

Volunteers, service providers, professionals, corporations, individuals and organized labour all come together through United Way with one purpose: to ensure that services and programs are available when people need them.



**One County
One Heart
One Way**

maximum impact



\$4/pay (\$104/year)

Helps to get a homeless family into a home with a new start in life

\$17/pay (\$442/year)

Provides a bed, meals, clothing, laundry and counselling in a shelter for a homeless woman for one month

\$26/pay (\$676/year)

Helps to provide deaf people counselling in their first language: sign language

\$50/pay (\$1352)

Helps 50 children to learn about healthy eating and cooking reducing the likelihood of obesity and juvenile diabetes

\$73/pay (\$1,898/year)

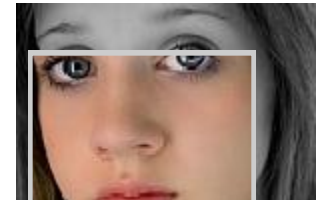
Allows a toddler to learn in an early child care environment while their parent continues their education

\$100/pay (\$2,600/year)

Provides a weekly recreation program for 23 youths with intellectual challenges for a year

(Based on 26 pay periods per year)

charitable tax receipts



United Way issues charitable tax receipts that will reduce your federal and provincial income tax. For example:

Your gift of	Income Range			
	\$36,848-\$73,698	Above \$73,698		
	Total Tax Savings	Actual Cost to You	Total Tax Savings	Actual Cost to you
\$100	\$21.05	\$78.95	\$24.44	\$75.56
\$200	\$42.10	\$157.90	\$48.88	\$151.12
\$500	\$162.58	\$337.42	\$190.10	\$309.90
\$1,000	\$363.38	\$636.62	\$422.15	\$577.85
\$5,000	\$1,969.78	\$3,030.22	\$2,278.54	\$2,721.46

it's so easy to give

- Donate 1% of your annual salary
- Donate one hour's pay per month
- Donate the equivalent of a coffee break (15 minutes) per pay period.
- Match the average donation in your organization
- Increase your donation from last year by even two dollars per pay period
- Donate securities, avoid capital gains tax and receive charitable receipt for full amount

Collaborative Initiatives and Grants

Homelessness Outreach Communities Project

A Call for Proposal to administer \$1.3 million in rural areas of Ontario in support of homelessness initiatives was tendered and UWGSC was the successful candidate. After a Call for Proposal for funding was distributed, 23 successful applications were selected. The fee for this administration directly benefits the communities in the County of Simcoe.

Simcoe County Alliance to End Homelessness

Established in December 1998, SCATEH is a coalition of over 70 community stakeholders and front line workers who are committed to developing and implementing strategies that will eliminate homelessness. This year, a first annual report card was launched outlining the challenges as well as the successes of service delivery to the people of Simcoe County.

Orillia Community Kitchen Resource Group

The role of OCKRG, through providing hands-on nutritional workshops, is to:

- Increase food skills and healthy eating knowledge in vulnerable populations.
- Foster community kitchen development in Orillia and area through partnerships, educational presentations, and workshops.
- Build community around food by creating opportunities for people in Orillia and area to learn and grow together.
- Be a resource for other community kitchen groups to share and collaborate.

The role of UWGSC is to act in an advisory capacity and provide financial and governance assistance by maintaining records and accounts as well as generating financial statements.

Eat Well to Excel

EWTE the Simcoe County Nutrition Program for School-Age Children, is a non-profit organization that supports volunteer run breakfast clubs, nutritious snack, and lunch programs in over 185 schools in Simcoe County. Currently, more than 500 volunteers prepare and serve nutritious meals to over 60,000 children daily. UWGSC plays an important role in this initiative by providing leadership on the steering committee and fiscal management, acting in a flow through capacity for provincial funding.

Winter Warmth

Power Stream, Hydro One and Innisfil Hydro came on board this year, joining Enbridge Gas, Union Gas and Veridian Hydro. Grants totalling \$112,200 were available to assist 1078 individuals (622 children in 328 homes) in difficult circumstances and in need of assistance in Simcoe County.

Training & Consulting Services

A core of highly skilled professional trainers and consultants contribute their business and management expertise through United Way to any non-profit or charity in Simcoe County. This group helps build internal capacity so that organizations can deliver on their mission and be transparent and accountable to the public.

Community Impact Grants (CIGs)

Autism Ontario Simcoe County Chapter

Fun and Friends Club—Bi-monthly 2 hour program for teens and children with autism to participate in activities and develop skills

Barrie Community Health Centre

Using Your Barrie Good Food Box—Skill-building demonstrations - hands-on activities on how to prepare fresh produce

Barrie Literacy Council

Increased mentoring hours for adults needing help with literacy skills

C.O.P.E. Service Dogs

High School Assistance Dog Program—Each dog's 2 year training is spear-headed by marginalized high school youth at risk of leaving school

Catholic Family Services in partnership with Deaf Access Simcoe

ASL interpretation or note taking services during counselling sessions to provide access to the deaf, deafened and hard of hearing community

Elizabeth Fry Society

Grocery Assistance Program—Food Bank

Georgian Bay Native Friendship Centre

Outreach Program—Assist clients in areas of housing needs and basic needs

Georgian Triangle Residential Resource Centre

Orillia Housing Resource Centre—Works with people with complex needs to prevent homelessness, assists in search for permanent housing and administers rent/energy bank to prevent evictions and utility cut-offs

Hospice Huronia

Community Seminar: Suicide Survivors Coping skills for families and friends with

Karen Letofsky from the Toronto Distress Centre

Huronian Restorative Justice Project—FACE for families

Support to families to face tough issues together.

Information Orillia & Telecare Orillia

To provide staff and volunteers opportunity to develop skills in area of information and referral - a confidential 24-hour telephone listening service

Lance Krasman Memorial Centre for Community Mental Health

Access to Transportation—A shuttle service between Alliston, Beeton and Tottenham twice a day, three days a week to provide access to services, consumer options, supports and socialization

Matthews House Hospice

Enhancement to ongoing programs and services

Transportation to several group programs, 1-1 home support

SCAPD

Stimulating small business interest in increasing accessibility



Member Agencies

STRONG, NURTURING FAMILIES

Family Services York Region

Professional counselling services to individuals, couples and families in the Bradford/West Gwillimbury area who are experiencing difficulties coping with life stresses and problems in interpersonal relationships.

YMCA of Simcoe Muskoka

The Young Parent Program provides high quality child care to the children of student parents of Alliston, Barrie, Midland and the surrounding community. This program enables students to continue their secondary education with less interruption.

LIVING WITH INDEPENDENCE AND DIGNITY

Canadian Hearing Society

Hearing Health Care Program provides communication and hearing care support services to enable people with hearing loss to carry out daily activities independently, safely and with reduced difficulties.

Canadian Mental Health Association

RSVP (Recreational, Supportive, Vocational, Peer Support) offers individuals an opportunity to build relationships, learn and re-learn life skills in a supportive and welcoming setting, and the opportunity to learn work related skills and to participate in social and recreational activities.

CNIB

Independent Living Skills, Orientation & Mobility and Low Vision Referral and Support Services provides people of all ages with vision loss access to support/services and information that enhances their independence, develops their skills of daily living, and allows them to move safely at home or in the community.

Deaf Access Simcoe Muskoka

Support Services, Interpreting and Counselling provides clients who are deaf, deafened and hard of hearing in Simcoe County with access to the same opportunities as others in the community.

Epilepsy Simcoe County

Education/Awareness/Support Services provides educational material to those affected by epilepsy and reaches out to social agencies to educate on matters concerning epilepsy.

Hospice Simcoe

Hospice Simcoe comforts and empowers people on life's journey, especially those living with a life threatening illness or grief, by offering information, support, hope, choice, dignity, meaningful and compassionate care.

Simcoe Community Services

Consumer Resource Centre provides individuals with an intellectual disability a place to meet where they can exchange peer support and access information about their community.

Simcoe County Association for the Physically Disabled

Programs are designed to assist individuals with physical disabilities to lead dignified, productive and independent lives in the community.

St. John Ambulance

Clients of Therapy Dog Program are individuals needing comfort and companionship of a pet, while unable to care for their own. They may be seniors, disabled either physically or mentally, lonely or institutionalized.

REDUCED CYCLES OF POVERTY AND ABUSE

David Busby Street Centre

A drop-in centre designed to provide a warm, safe environment for the marginalized population, those who are socially isolated, the homeless, low-income families, youth and seniors in the community. Approximately 70% of individuals accessing services have some form of mental health issue.

Catholic Family Services—Simcoe County

Provides counselling services for adults who have experienced trauma (sexual, physical, emotional abuse and neglect) in childhood and adolescence.

Elizabeth Fry Society of Simcoe County

Joyce Kope House provides a safe 27-bed shelter for women from a variety of situations including homelessness, release from mental health facilities, overflow from shelters for the abused, those with addictions (alcohol, drugs, gambling), elderly without housing, those released from correctional institutions and women who have been released on bail supervision.

Family Services York Region

Professional counselling services to individuals, couples and families in the Bradford/West Gwillimbury area who are experiencing difficulties coping with life stresses and problems in interpersonal relationships.

SAFE, SUPPORTIVE AND INCLUSIVE COMMUNITIES

Canadian Red Cross Society

Assists individuals and communities to prepare for and reduce the impact of disasters and emergencies, and to ensure all those affected have access to basic needs such as food, shelter and clothing.

Community Link North Simcoe

Volunteer & Transportation Services promotes volunteerism and a volunteer-based transportation program to enable participation in community life.

CONTACT – South Simcoe Community Information Centre

Provides information on human services to South Simcoe residents. Housing Resource Centre provides support and information for people who are homeless, at risk of being homeless and/or looking for affordable accommodation. Community Kitchen provides help around healthy shopping, meal planning and preparation.

Simcoe Community Services

Barrie Housing Support Services is a registry for people who are, or are at risk of becoming, homeless.

St. John Ambulance

Medical First Response Unit provides First Aid to attendees at many events held in the region.

HEALTHY THRIVING CHILDREN AND YOUTH

Big Brothers/Big Sisters of North Simcoe

Littles (generally between the ages of 6 and 16) who could use a friend, are matched with a Big Brother/Sister (a responsible, caring adult 18 years of age+) who provides one-to-one mentoring friendship. Big Bunch is a group mentoring program for children awaiting a one-to-one match.

Borden Family Resource Centre

The Youth Program is designed to provide youth between the ages of 10 and 18 with a comprehensive range of services to support and enrich the lives of youth within the Borden Community.

Canadian Red Cross

Youth Training in Action Program offers educational activities and skills training.

Family Services York Region

Youth at Risk Program is a school-based program to identify and provide service to youth at risk for psychosocial and emotional difficulties.

Simcoe Community Services

Youth In Action Program provides individuals with an intellectual disability opportunities to develop communication, social, work and life skills.

St. John Ambulance

Youth Division works with youth 11-21 years old considering careers in health or community related fields.